

WHY Minnesota Counties MATTER!

A publication of the Association of Minnesota Counties
in partnership with the National Association of Counties.

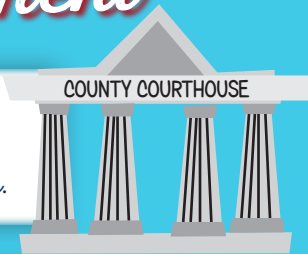
Minnesota's 87 county governments provide the essential services to create healthy, vibrant, and safe communities.

Counties support and maintain public infrastructure, transportation and economic development assets; keep residents healthy; ensure public safety to protect our citizens; maintain public information and coordinate elections; and implement a broad array of programs in a cost-effective and efficient manner.

Minnesotans depend on counties to provide services that build, maintain, and protect their homes, schools and neighborhoods. Counties are also an instrumental player in America's intergovernmental system of federal, state, and local governments.

General Government

447 commissioners serve on
Minnesota's **87** county boards.



Minnesota counties spent

\$6 BILLION

providing a *wide array of essential services* to Minnesota's citizens in 2012.



38,443 Minnesotans were *employed* by counties in full-time, part-time, and seasonal positions in 2012.



Economic Development



Minnesota counties invested **\$73 MILLION** in *economic development* and *housing* in 2012.

Health & Human Services

Minnesota counties provided **57%** or more than

\$204 MILLION

of the total statewide

funding for child welfare services in 2012.



Minnesota counties

assessed **17,777**

reports of maltreatment in 2012.



14,089 clients received *county public health home visits* in 2012.

Over **6,000** *food establishments* were inspected by county environmental health programs in 2012.

DINER



Elections

Minnesota counties oversaw voting at

2,936 *polling places* and coordinated
27,602 *election judges* in 2012.

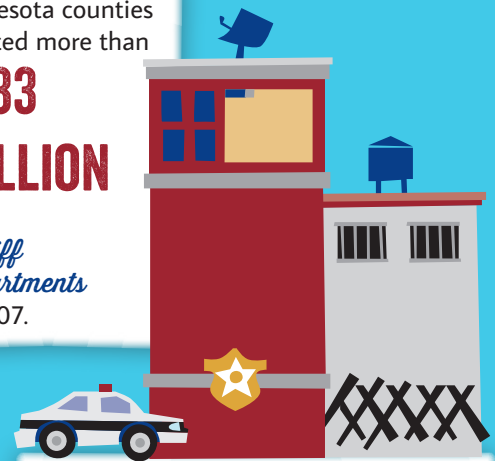


Public Safety & Corrections

Minnesota counties invested more than

\$433
MILLION

in
Sheriff
Departments
in 2007.



Minnesota counties invested more than

\$379 MILLION in
correctional facilities in 2007.

Environment & Natural Resources

Minnesota counties invest

\$52.2
MILLION

in *recycling*
and
solid waste
activities
every year.



Minnesota counties will invest approximately

\$19.6 MILLION on programs designed to
protect and improve *water resources* in 2014-15.

Transportation & Infrastructure

Minnesota has **45,000** *miles of county roads* which
means that 40.7% of all vehicle miles traveled are on
county-maintained roads.

Minnesota counties invested

\$447 MILLION

in *maintaining* existing roads
and bridges in 2012.

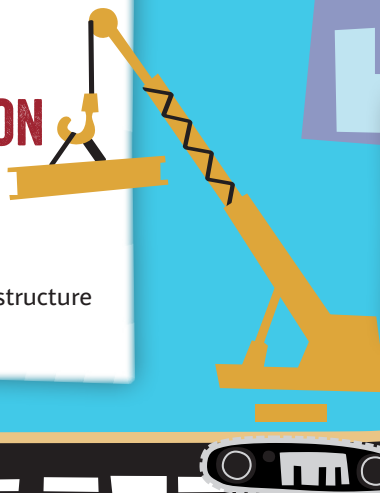


There are currently
7,615 *bridges*
in the county
system.

Minnesota counties
invested

\$890
MILLION

in *building*
roads,
bridges,
and other
public infrastructure
in 2012.



Minnesota counties fund

40% of
major transit projects
in the Twin Cities
Metro Area.

Sources: "Minnesota County Budgets: 2013 Summary Budget Data Together With 2012 Revised Summary Budget Data" - Office of the State Auditor, April 2013.
"2012 Election Administration and Voting Survey: A Summary of Key Findings" - U.S. Election Assistance Commission, September 2013.
"Local Public Health Planning and Performance Measurement Reporting System (LPH PPMRS)" - Minnesota Department of Health, 2012.
"Census of Governments: Finance" - U.S. Census Bureau, 2007.
"Board of Water & Soil Resources (BWSR) Biennial Budget Review" - 2012.
"Salaries & Benefits Survey for Minnesota Local Governments" - 2013.
"Local Roads and Bridges Highway Users Tax Distribution Fund Brochure" - Minnesota Department of Transportation (MnDOT) State Aid for Local Transportation, January 2013.

